

Max & Bunny

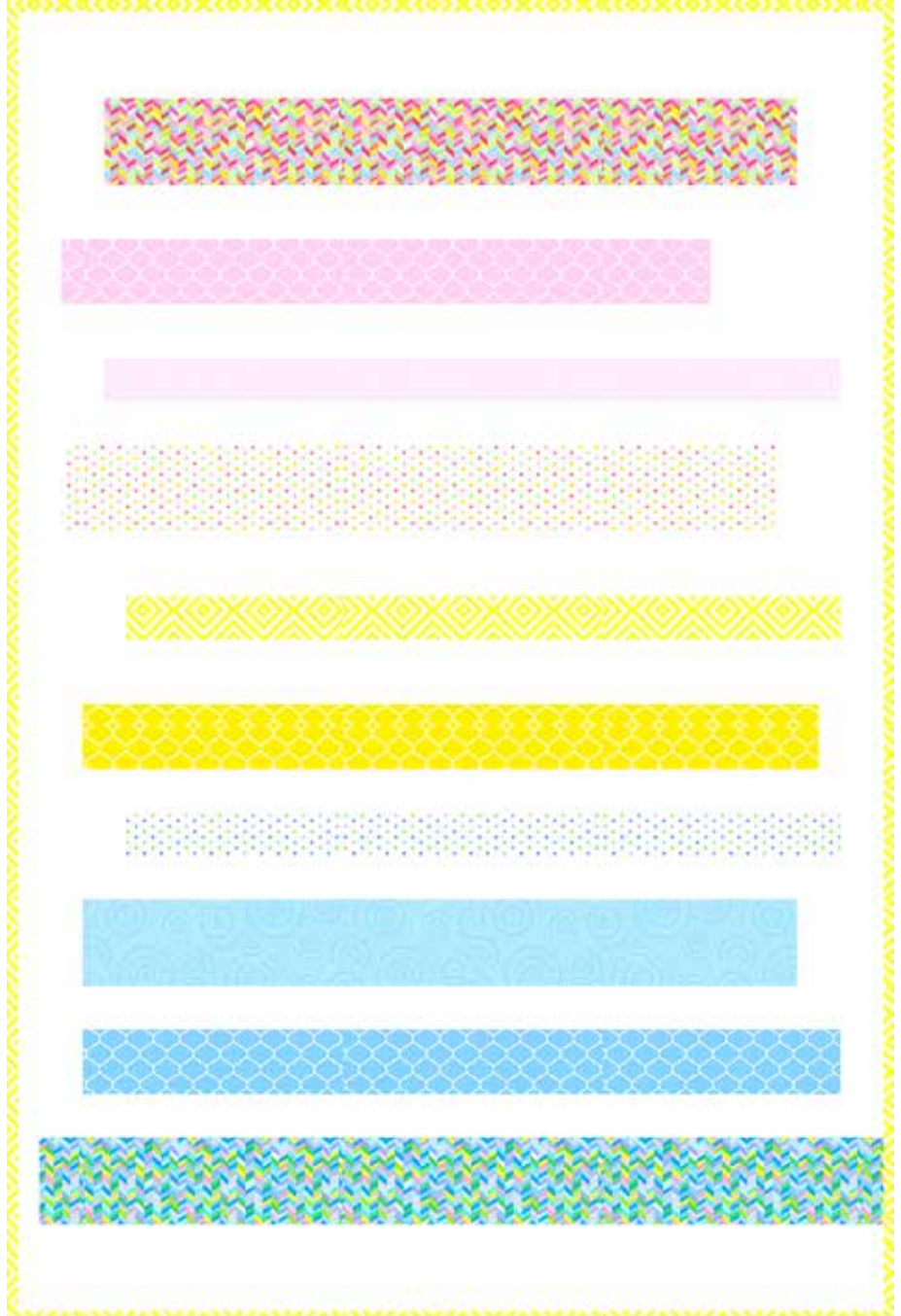
FABRICS BY BETH SNYDER



Row by Row Quilt Design:
Vanilla Latte Quilts

Quilt Size: 40" x 60"

andoverfabrics.com



andover



makower uk
The Henley Studio

Free Pattern Download Available

1384 Broadway New York, NY 10018
Tel. (800) 223-5678 • andoverfabrics.com

Row by Row Quilt



Introducing Andover Fabrics new collection: **Max & Bunny** by Beth Snyder

Row by Row quilt designed by Vanilla Latte Quilts

Quilt finishes 40" x 60"

Spring has sprung, and this quilt celebrates the season with pretty pastel prints. This could be someone's very first patchwork, with piecing as gentle and easy as a spring breeze. It is just the right size to comfort baby.

Cutting Directions

Note: Read assembly directions before cutting patches. All measurements are cut sizes and include 1/4" seam allowances. WOF designates the width of fabric from selvedge to selvedge (approximately 42" wide).

- Fabric A** Cut (1) strip 4 1/2" x 39 1/2"
- Fabric B** Cut (1) strip 4 1/2" x 32 1/2"
- Fabric C** Cut (1) strip 2 1/2" x 33 1/2"
- Fabric D** Cut (1) strip 4 1/2" x 33 1/2"
- Fabric E** Cut (1) strip 4 1/2" x 33 1/2"
- Fabric F** Cut (1) strip 2 1/2" x 34 1/2"
- Fabric G** Cut (5) strips 2 1/2" x WOF for binding
Cut (1) strip 2 1/2" x 33 1/2"
- Fabric H** Cut (1) strip 3 1/2" x 35 1/2"
- Fabric I** Cut (1) strip 3 1/2" x 30 1/2"
- Fabric J** Cut (1) strip 3 1/2" x 34 1/2"

Fabric Requirements

		Yardage	Fabric
Fabric A	setting	1/4 yard	7525-B
Fabric B	setting	1/4 yard	7525-E
Fabric C	setting	1/8 yard	7526-B
Fabric D	setting	1/4 yard	7526-E
Fabric E	setting	1/4 yard	7527-B
Fabric F	setting	1/8 yard	7527-E
*Fabric G	setting	5/8 yard	7528-Y
Fabric H	setting	1/8 yard	7529-B
Fabric I	setting	1/8 yard	7529-E
Fabric J	setting	1/8 yard	7529-Y
Fabric K	background	1 1/2 yards	A-S-L-White
Backing		3 yards	7527-C

*includes binding

- Fabric K** Cut (2) strips 4 1/2" x 40 1/2"
Cut (2) strips 3 1/2" x 40 1/2"
Cut (2) strips 3" x 40 1/2"
Cut (5) strips 2 1/2" x 40 1/2"
Cut (3) squares 4 1/2" x 4 1/2"
Cut (1) strip 4 1/2" x 5 1/2"
Cut (1) strip 3 1/2" x 4 1/2"
Cut (3) squares 3 1/2" x 3 1/2"
Cut (1) strip 2 1/2" x 8 1/2"
Cut (2) strips 2 1/2" x 5 1/2"
Cut (2) strips 2 1/2" x 4 1/2"
Cut (2) strips 2 1/2" x 3 1/2"
Cut (1) strip 1 1/2" x 4 1/2"
Cut (3) squares 2 1/2" x 2 1/2"
- Backing** Cut (2) panels 34" x 48", pieced to fit quilt top with overlap on all sides

Making the Quilt

1. Referring to the Quilt Diagram, sew Fabric K strips or squares to the ends of the appropriate print strips. Press seam allowances away from the print strips.
2. Join the pieced strips alternately with the appropriate Fabric K 40 1/2"-long strips. Press the seam allowances in one direction or as you wish.

Finishing the Quilt

3. Layer the quilt with batting and backing and baste. Quilt in the ditch around the strips. Quilt around the printed motifs if you wish. Bind to finish the quilt.

Row by Row Quilt

K		4½" x 40½"
4½"	B	4½" x 32½"
		3" x 40½"
2½" x 3½"	I	3½" x 30½"
		2½" x 8½"
		3" x 40½"
2½" x 4½"	F	2½" x 34½"
		2½" x 40½"
2½" x 4½"	D	4½" x 33½"
		4½" x 5½"
		3½" x 40½"
2½" x 5½"	G	2½" x 33½"
		2½"
		3½" x 40½"
3½"	J	3½" x 34½"
		3½"
		2½" x 40½"
2½" x 5½"	C	2½" x 33½"
		2½"
		2½" x 40½"
3½" x 4½"	E	4½" x 33½"
		4½"
		2½" x 40½"
3½"	H	3½" x 35½"
		2½" x 3½"
		2½" x 40½"
1½" x 4½"	A	4½" x 39½"
		4½" x 40½"

Quilt Diagram

Max and Bunny

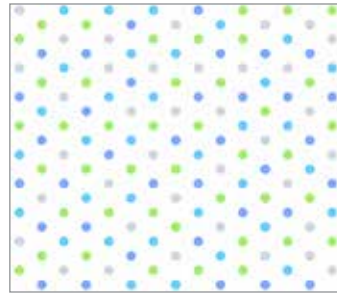
FABRICS BY BETH SNYDER



7525-B*



7525-E*



7526-B*



7526-E*



7527-B*



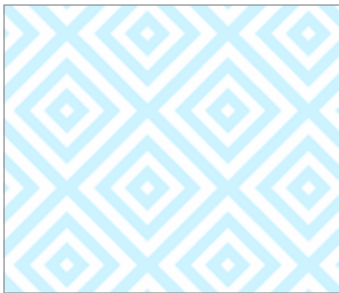
7527-C*



7527-E*



7527-Y*



7528-B



7528-C



7528-E



7528-Y*



7529-B*



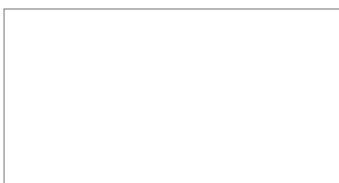
7529-C



7529-E*



7529-Y*



A-S-L-White*

*Indicates fabrics used in quilt pattern. Fabrics shown are 30% of actual size.

andover



makower uk
The Henley Studio

Free Pattern Download Available

1384 Broadway New York, NY 10018
Tel. (800) 223-5678 • andoverfabrics.com